

# Board of Directors and Corporate Auditors

(As of June 30, 2005)



From left: Hiroshi Kamata, President; Chugo Marumori, Chairman; and Teruhiko Ujiie, Deputy President

**Chairman**  
Chugo Marumori

**President**  
Hiroshi Kamata

**Deputy President**  
Teruhiko Ujiie

**Senior Managing Director**  
Seikichi Watanabe

**Managing Directors**  
Yoshiaki Nagayama  
Toshikazu Nakamata  
Nobuhiro Chiba  
Reiichi Sato

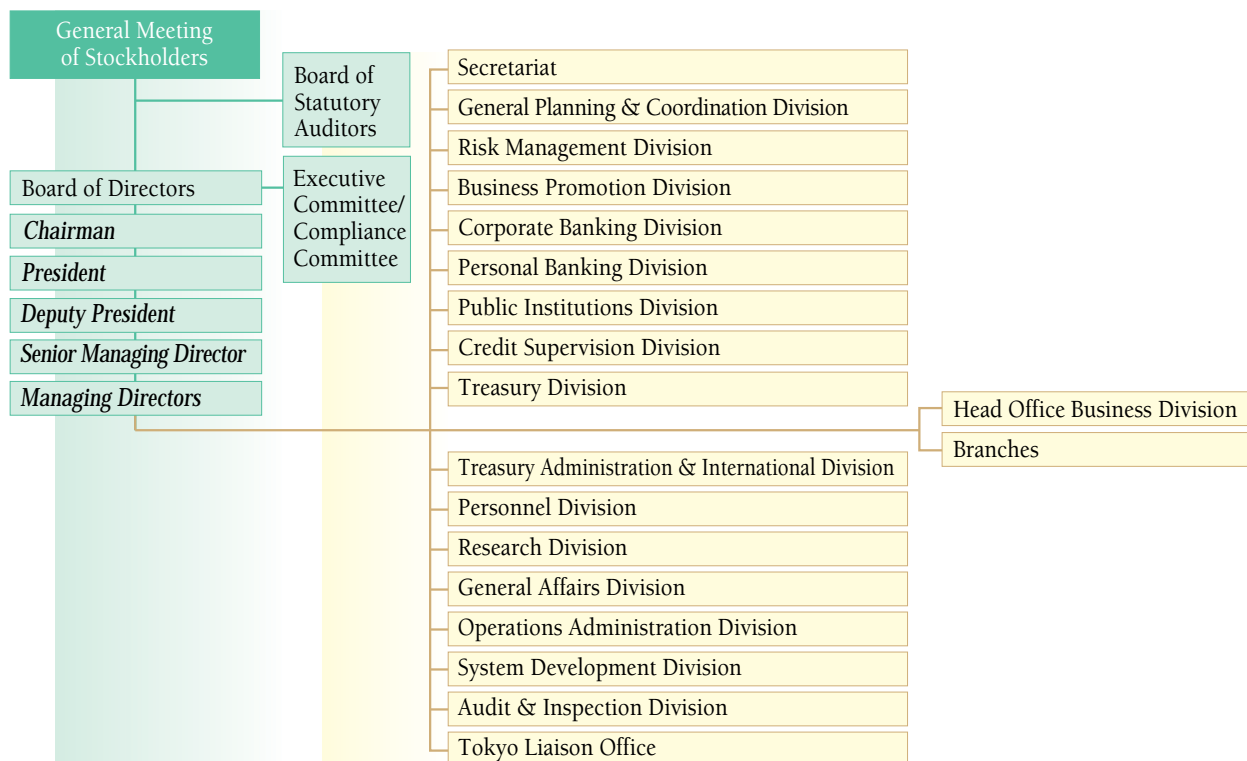
**Directors**  
Katsumi Owada  
Kimitsugu Nagao  
Masayuki Yamada  
Shinichi Takahashi  
Mitsutaka Kambe  
Tetsuya Fujishiro  
Masashi Saijo  
Eiji Ouchi

**Standing Statutory Auditors**  
Naoto Kobayashi  
Toshio Onodera

**Statutory Auditors**  
Toshihiro Moriya  
Yuzuru Aoki  
Torao Imasato

# Organization

(As of June 30, 2005)



※ Shanghai Representative Office (opened July 22, 2005)